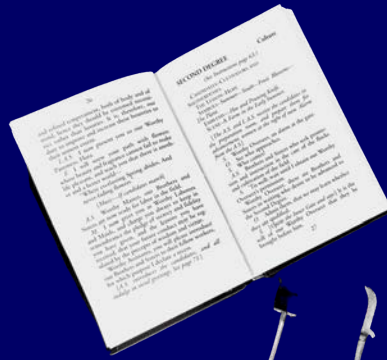
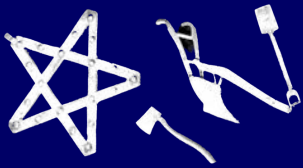




*First*  
DEGREE

*Spring*  
SEASON

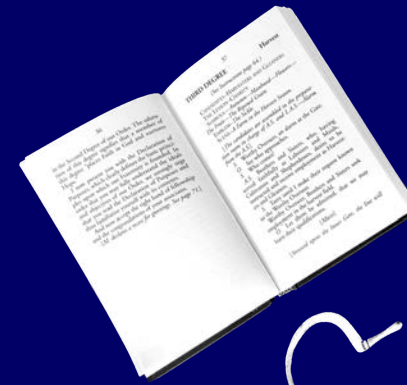
*Faith*  
LESSON



*Second*  
DEGREE

*Summer*  
SEASON

*Hope*  
LESSON



*Third*  
DEGREE

*Fall*  
SEASON

*Charity*  
LESSON



## *Ax, Plow, Harrow & Spade*

### EMBLEMS

#### **The Ax - Symbol of Perseverance**

"The Ax is used to cut away obstructions in the fields and to prepare timber for use. Its use teaches us perseverance in overcoming obstacles; for, as by repeated blows it cleaves its way through the hardest wood, so should we by repeated trials surmount every difficulty."

#### **The Plow - Symbol of Preparation and Wisdom**

"The Plow is used to break up the ground and prepare it for planting. This should teach us to drive the plowshare of thought diligently through the heavy soil of ignorance, and thus prepare the mind for the growth of knowledge and wisdom."

#### **The Harrow - Symbol of Study and Observation**

"The Harrow is used to pulverize the soil as well as to cover the seed. Let this be emblematic of that course of study and observation necessary to enable you fully to understand your business."

#### **The Spade - Symbol of Thoroughness**

"The Spade we use when we wish to penetrate deeper into the soil than we can with the Plow. It thus becomes the emblem of thoroughness. Whatsoever you attempt to do, strive to do it well."

## *Hoe & Pruning Knife*

### EMBLEMS

#### **The Hoe - Symbol of Cultivation of the Mind**

"The Hoe, with which we cut up weeds and stir the soil, is emblematic of that cultivation of the mind which destroys error and keeps our thoughts quickened and ready to receive and apply new facts as they appear, thus promoting the growth of knowledge and wisdom."

#### **The Pruning Knife - Symbol of Restraint**

"The Pruning Knife is used by us to remove useless and injurious growth from our trees, plants and vines, and should remind you of that proper degree of restraint so necessary to improve yourself, to keep your passions within due bounds, and prevent your fancy from leading you astray after the vanities and vices of the world."

## *Sickle*

### EMBLEM

#### **The Sickle - Symbol of Harvest, Prosperity and Honest Employment**

"Like all the tools we use, it is ancient and honorable; as an emblem of our Order, there is none more so. It speaks of peace and prosperity, and is the harbinger of joy. It is used not merely to reap the golden grain for the sheaf, but, in the field of the mind and heart and soul, to gather every precious stalk, every opening flower, and every desirable fruit. Thus shall the implement provide a reminder of honorable employment, preaching its sermon of present prosperity and peace, and its prophecy of future plenty and rejoicing?"



#### **The Agate - Symbol of Fidelity**

"Let the Agate be to you an emblem of Fidelity. May your principles of manhood and womanhood be as firmly impressed as the lasting colors in the stone, and may our friendship be as firm as the stone itself."

*Agate*  
EMBLEM

*Fourth*  
DEGREE

*Winter*  
SEASON

*Fidelity*  
LESSON

## Introduction to Grange heritage, ritual and lessons

### DEGREES

The Grange, like other fraternal societies, includes various lessons told and learned through degrees. These are short enactments, like plays, that allow members of the Grange to pass on to new candidates the values of the organization and lessons that can be learned - in the Grange's case - through the natural world and work of agriculture.

There are a total of seven degrees in the Grange, the first four are performed at the local/Subordinate Grange level. The fifth, sixth and seventh degrees are performed at the Pomona/regional, State and National Grange levels respectively. Any member may witness any degree if he or she has previously witnessed those that come before it.

### SEASONS

Each of the first four degrees are set in a season, starting in Spring, and look at the things learned through nature or encountered in agriculture during that time of year.

### LESSONS

The primary foundational principles of the Grange - faith, hope, charity and fidelity - are presented through the degrees.

### EMBLEMS

In each of the Degrees of the Subordinate Grange (First through Fourth) candidates are shown various agricultural implements that relate to the lessons of the degrees.



### NATIONAL GRANGE

Membership/Leadership Development  
Joe Stefenoni, Director  
(707) 328-0631  
[membership@nationalgrange.org](mailto:membership@nationalgrange.org)

### HEADQUARTERS & SALES OFFICE

1616 H St. NW  
Washington, DC 20006  
(202) 628-3507  
[sales@nationalgrange.org](mailto:sales@nationalgrange.org)

*All quotes come from the 2013 Edition of the Subordinate Grange Manual, available for sale through the National Grange Supply Store.*

# Degrees and Symbols

## OF THE SUBORDINATE GRANGE

